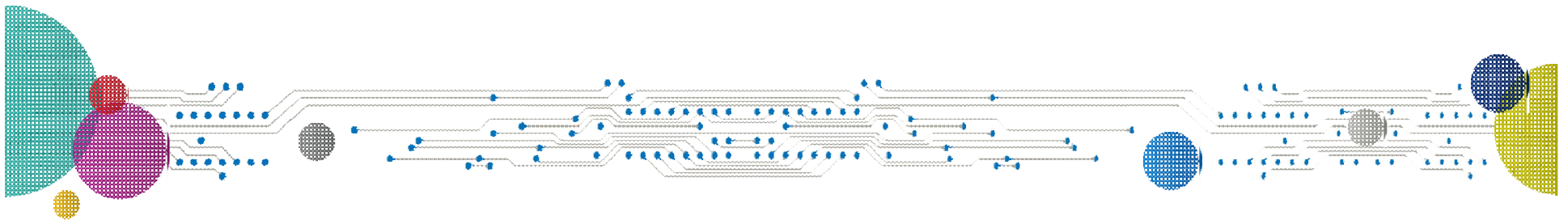




LAB Homework

mbed Instructions for MultiTech mDot



Lab Overview

Equipment: A Laptop with 2 USB ports. (not XP)

Setup/Downloads

- Serial program
- mbed account
- Driver from ST
- Software downloads (will be done in class)

Serial Port Install Software

If you prefer Putty or another USB to serial solution please use it.

Install TeraTerm or similar Serial program.

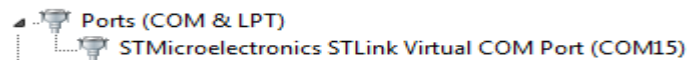
<http://ttssh2.sourceforge.jp/index.html.en>

Click on the “download page”

Run “teraterm-4.87.exe” accept the defaults

Windows Driver update

1. Slide down the page till "**PC Configuration**"
2. **Click** on "**ST Link Driver**" or use the below link
<https://developer.mbed.org/teams/st/wiki/ST-Link-Driver>
3. "ST Link Driver" is now open.
4. **Download** "**Download ST-Link/V2 driver**"
5. **Extract** the **zip** file to a known location.
6. Depending on your machine, **Run** either **dpinst_amd64.exe** (for 64 bit system) or **dpinst_x86.exe** (for 32 bit).
(As a reference: Window Button, Control Panel, System)
7. **Plug board** into system. The Drivers will need to install, please wait a minute or so.
8. **Verify** the unit can be seen by the system on Control Panel, Device Manager, Ports (Com & LPT)





Mac/Linux Serial Port

Linux Steps:

1. You're done.

Mac Steps:

1. You are also done.



Setup mbed Account and Add Platform

1. Go to developer.mbed.org
2. **Sign-up** and/or **log-in** (no instructions provided)

Add a Platform to mbed

1. (From www.mbed.org)
Click on **Developer**(top), **Platforms**(top), **MultiTech**(Right side), **Click** on **MultiTech mDot**.
Or
Go to <https://developer.mbed.org/platforms/MTS-mDot-F411/>
2. **Click** on the blue box “**Add to your mbed Compiler**” (right side)

Alternative add a Platform to mbed

1. In a Browser go to www.mbed.org
2. **Click** on “**Developer Site**”
3. **Select** “**Compiler**”
4. **Click** on (top right) “**No Selected**” or “**Platform you already have setup**”
5. **Click** “**MultiTech mDot**” (bottom) and “**Select Platform**” (top corner).

Bonus: you may add an additional platforms by clicking on “**Add Platform**”

Programs to download

- **Click** on the **Links** and **“Import this program”** (Blue Box Right side).
- **Alt Tab** to mbed Workspace. The computer is waiting for a program name to finish the install.
- **Click “Import”** in mbed Workspace.

Hello World Program:

https://developer.mbed.org/teams/MultiTech/code/mDot_helloworld/?platform=MTS-mDot-F411

libmDot_sample:

https://developer.mbed.org/teams/MultiTech/code/libmDot_sample/?platform=MTS-mDot-F411

AT Command Line Demo:

https://developer.mbed.org/teams/MultiTech/code/mDot_AT_firmware/?platform=MTS-mDot-F411

EVb standalone Demo:

<https://developer.mbed.org/teams/Multi-Hackers/code/MTDOT-EVBDemo/>